

## **Historic, archived document**

Do not assume content reflects current scientific knowledge, policies, or practices.



5B115  
Z9C325  
R

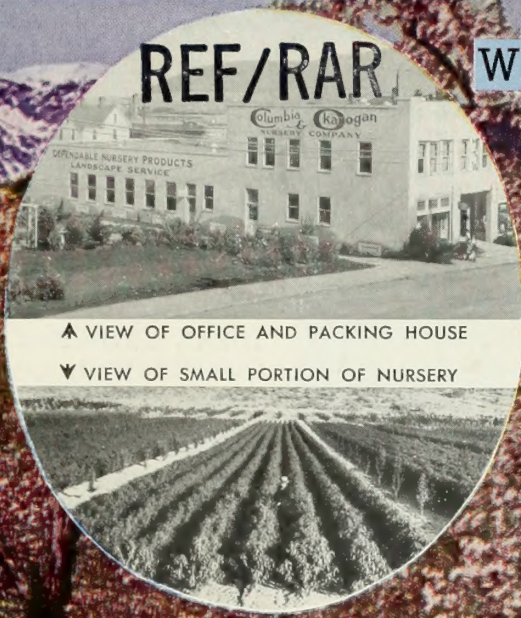
Feb/Mar

# Columbia & Kanogan NURSERY COMPANY

NOV 8 - 1954  
Department of Agriculture

REF/RAR

WENATCHEE, WASH.

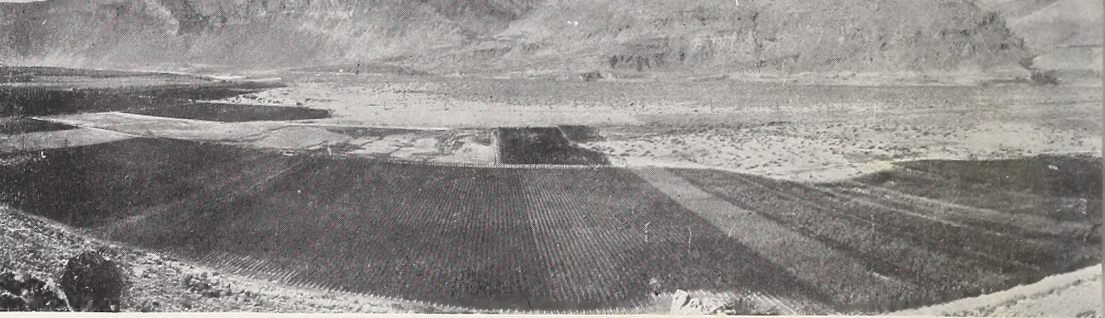


▲ VIEW OF OFFICE AND PACKING HOUSE

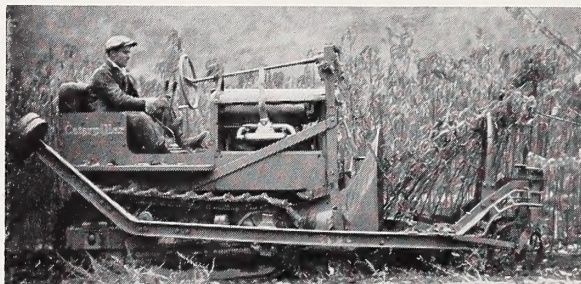
▼ VIEW OF SMALL PORTION OF NURSERY



Fall 1954, Spring 1955 Orchard & Garden Guide



**S**INCE "HORSE AND BUGGY DAYS" back in 1906, the C & O Nursery has been continuously engaged in the propagation and growing of dependable trees and nursery products. Today our growing grounds and orchard shown above embrace 300 acres. Through our long and close experience with the orchard and fruit industry, we have an understanding of the planter's problems and requirements. Development of "Better Varieties" and production of quality trees and plants is not a sideline with us—it is our life work. A number of outstanding commercial fruit varieties have been introduced by our Company, and are the foundation for many of America's finest orchards.



### IDEAL GROWING CONDITIONS

- 300 Days of Sunshine
- Rich, Volcanic Ash Soil
- Abundance of Controlled Moisture

Along with ideal growing conditions, we use the most modern equipment. The C & O power tree digger does a better job getting all the roots without injury to the trees. Our modern storage with controlled temperature and humidity assures you first quality trees and plants in good, live, growing condition. The men who grow, pack, and ship our stock have a life-time experience in this business.

### A GOOD BEGINNING IS SO IMPORTANT

It costs more money to produce top-quality nursery stock—but there's no business of which we know where quality and dependability count for more than in this business. A good, fruitful tree quickly and immeasurably returns its first cost.

Participation in the Nursery Improvement Program sponsored by the Washington State Department of Agriculture calls for the careful examination by State Department of Agriculture experts of all tree fruit nursery stock grown each year. It also calls for their maintaining a constant close check on budwood and seed sources. **C & O maintains a constant vigilance against disease, bud perpetuated disorders, and improper variety clear from the seed right through to the bearing tree.**

C & O is equipped to supply you a complete landscape job or a single plant to enhance the beauty of your home. C & O northern grown roses, shrubs, evergreens, shade and ornamental trees are full of life and vigor. Over 20 acres supervised by specially trained men is devoted to growing ornamentals.



Globe Locust,  
Flowering Cherry  
and Shade in  
the C. & O. Nurseries

All prices quoted in this catalog subject to change without notice.

**PRICE on APPLES, PEARS, APRICOTS, PEACHES, PLUMS, PRUNES  
NECTARINES and QUINCES — except Special Varieties as noted\***

Sizes	Caliper	Each	25 Lots	50 Lots	300 Lots
3 to 4 foot	3/8-1/2 inch.....	\$1.10	\$ .85	\$ .75	\$ .70
4 to 6 foot	1/2-5/8 inch.....	1.25	.95	.85	.80
5 to 7 foot	5/8-3/4 inch.....	1.50	1.05	.95	.90

{ Extra Select Grade.

**\*PRICES on ROYAL RED DELICIOUS, NU-JON, SHELRED APPLES  
and MAX-RED BARTLETT PEAR**

3 to 4 foot	3/8-1/2 inch.....	\$1.75	\$1.25	\$1.15	\$1.10
4 to 6 foot	1/2-5/8 inch.....	2.00	1.35	1.25	1.20
5 to 7 foot	5/8-3/4 inch.....	2.25	1.50	1.35	1.30

**CHERRIES PRICED ON PAGE 9 — DWARF FRUIT TREES LISTED AND PRICED ON PAGE 10**  
Note: Some varieties of fruit trees make a lower height in relation to caliper. In these instances the caliper will govern the grades.

**Write for Our Special Commercial Prices in lots of 1000 or more trees.**

Please Read SHIPPING INFORMATION on Page 35

## Apples

Varieties marked with an asterisk (\*) do well west of the Cascade Mountains.

Varieties listed in order of ripening.

### SUMMER VARIETIES

\***Crimson Beauty**—Flaming red, good quality and size. Ripens week earlier than Yellow Transparent. TREE very hardy, vigorous.

**Yellow Transparent**—Discontinued in favor of Lodi.

\***Lodi**—An improved Yellow Transparent that bears every year. Juicy, crisp and tender.

**Red June**—Attractive red skin; juicy and somewhat tart flavored. Hardy—productive.

### AUTUMN VARIETIES

\***Red Gravenstein**—Large, bright red, crisp and juicy. An old-time favorite cooking apple, especially fine for pies. Hardy.

**Gravenstein**—Discontinued in favor of Red Gravenstein.

\***Blackmack** (T.M. Reg.)—Colors solid, deep red and attains its color early. Crisp, tender, juicy, distinctive flavor. Tree grows well over wide territory, especially desirable for high elevations. Hardy.

**McIntosh Red**—Discontinued in favor of the more profitable variety, Blackmack.

\***Nu-Jon** (U. S. Plant Pat. No. 1075)—New, deep red striped apple of excellent quality and large size. Especially fine culinary apple. Exclusive "C&O" introduction.

### WINTER VARIETIES

**Blackjon** (T.M. Reg.)—A bud sport of Jonathan, earlier and more color, deep red. Exclusive "C&O" introduction.

**Jonathan**—Blackjon has replaced this apple.

\***Winter Banana**—Clear, waxy yellow with blush, tart flavor, good cooking. Hardy.

### ROYAL RED DELICIOUS

(U. S. Plant Pat. No. 1278)

The sensational new Red Delicious (sport of Richared Delicious). All the excellent qualities of its parent plus coloring earlier than any other Red Delicious. A sparkling cherry red. Exclusive "C&O" introduction. Supply limited.





SEEANDO  
RED ROME No. 262

↘ **Winesap** (Common)—Fruit medium, color red, good quality and keeper. Select strain.

↘ **Chelan**—Large, golden, excellent dessert and cooking. The first "C&O" introduction 1909.

↘ **Sheired** (T.M. Reg.)—Cross between Richared and Yellow Delicious. Crisp and juicy with flavor of each parent. Promising, bears early, good pollinizer.

↘ **\*Yellow Delicious**—An apple of unusually fine flavor and rich golden skin. Excellent cooker, fine dessert. Good pollinizer.

↘ **Northern Spy**—Large, yellow striped with red, rich and juicy. An old favorite. Hardy.

↘ **Newtown Pippin** (Yellow Newtown)—Large, yellow, excellent culinary apple.

### WINTER APPLES—Continued

↘ **\*Shotwell Delicious** (U. S. Plant Pat. No. 90)—A deep red Delicious with traces of stripes. Heavy producer and an especially fine tree structure. Exclusive "C&O" introduction.

↘ **Red Delicious**—Stark strain. Ripens just after Shotwell. Similar dark red color.

↘ **Richared Delicious** (T.M. Reg.)—Introduced by C&O in 1926. Bright, solid red of fine quality. Awarded the Wilder Medal.

↘ **\*King**—Very large, yellow, splashed with crimson. Excellent dessert apple.

↘ **Red Spitzenberg**—An old favorite dessert apple and one of the best canning.

↘ **Spokane Beauty**—Largest apple grown. Greenish yellow, striped with red.

↘ **Improved Blaxtayan No. 201** (T.M. Reg.)—New deeper, richer and darker red than ordinary Stayman. Better keeper in storage. Exclusive "C&O" introduction.

↘ **Stayman Winesap**—Blaxtayan has replaced this apple.

↘ **SeeandO Red Rome No. 262** (T.M. Reg.)—Profitable bearing orchards prove the value of this solid, deep, brilliant red colored bud sport of the Rome Beauty. Exclusive "C&O" introduction.

↘ **Rome Beauty**—Discontinued in favor of SeeandO Red Rome.

↘ **Improved SeeandO Winesap** (T.M. Reg.)—An improved all-red Winesap. Very dark, larger and much more beautiful than common Winesap. Exclusive "C&O" introduction.

↘ **Nero Red Rome** (T.M. Reg., Pat. Applied for)—Outstanding new sport. Colors early, covers the whole surface with a double striping of dark red under the full color. A much longer or taller apple than any other strain of Rome Beauty. Supply sold out for Fall 1954 and Spring 1955. Now booking advance orders. Price \$2.00 each. Write for quantity prices.

### CRAB APPLES

↘ **\*Transcendent**—Large, red and yellow striped, good eating and cooking.

↘ **Whitney**—Large, glossy, striped with carmine. Juicy, pleasant flavor. One of the most popular of the crab apples.

IMPROVED  
SEEANDO  
WINESAP

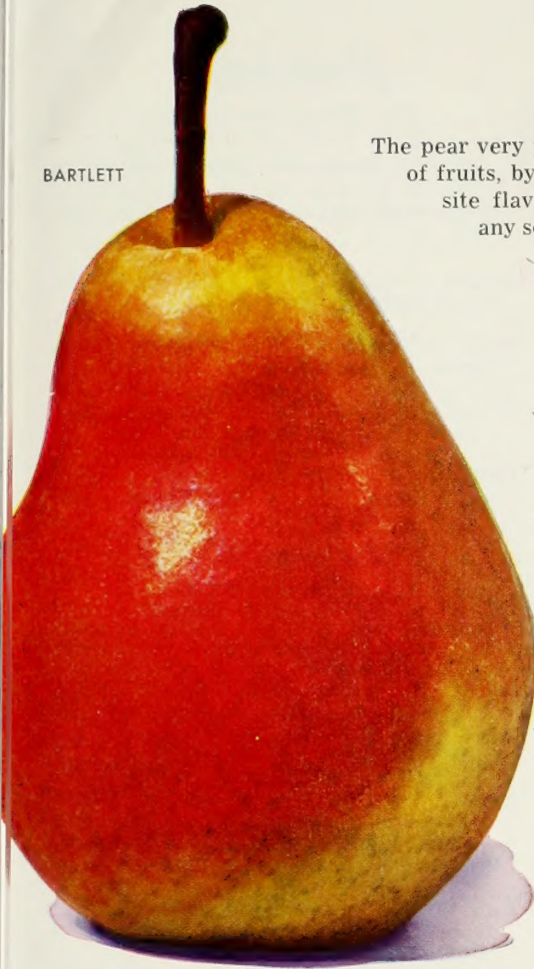


# Pears

(For Prices, See Page 3)

The pear very properly ranks as one of the most delicious of fruits, by reason of its fine, juicy texture and exquisite flavor and aroma. Pears will grow on almost any soil, provided it is moderately rich.

BARTLETT



✓ **Beurre D'Anjou** (Anjou)—A firm pear, rather large, flesh yellowish white, rich, buttery flavor, good keeper. One of the leading commercial pears. C&O **select strain** bears earlier than the average Anjou.

✓ **Doyenne Du Comice**—Large, color clear handsome yellow, sometimes brightened by delicate blush. Rich, juicy, excellent dessert. Sometimes called "Royal Riviera".

✓ **Seckel** — Small, color yellowish brown marked with pale russet, often with russet red cheek. Excellent for culinary and pickling. Very sweet.

✓ **Beurre Bosc** (Fall Russett)—Rich yellow overspread with cinnamon russet, flesh tender, melting, almost buttery, juicy with rich piquant flavor. Very good quality.

✓ **Old Home**—Blight resistant stock grown principally for top-working to other commercial pear varieties.



MAX-RED  
BARTLETT

✓ **Bartlett** — The leading commercial pear. Clear yellow slightly blushed with red, sometimes dotted with russet. Juicy, buttery, excellent dessert, canning and general purpose.

✓ **Max-Red Bartlett** (U. S. Plant Pat. No. 741) —A sport of Bartlett. The texture of the fruit is a little finer, the quality somewhat sweeter and juicier. The skin turns from a Morocco Red to a Mahogany Red.

✓ **Flemish Beauty**—Fruit medium to large, clear yellow overspread with brilliant red cheek. Shape rather globular. Quality improves when fruit is picked and ripened under cover. Tree very hardy and productive.

# Peaches

(For Prices, See Page 3)



RED  
HAVEN

“F” denotes freestone; “C” clingstone; “SC” semi-cling. Listed in order of ripening.

- ↘ **Mayflower**, SC—Earliest of all peaches, medium, red, white flesh. Productive.
- ↘ **Dixie Gem**, SC—Early, yellow-flesh of good quality. Introduction of the U.S.D.A., Ga.
- ↘ \* **Early Rochester** (U. S. Plant Pat. No. 351) F—Development from Rochester. Ripens about three weeks earlier, otherwise similar to Rochester in fruit, size and tree.
- ↘ \* **Redhaven**, F—New. Highly colored, good quality, yellow flesh. Ripens month ahead of Elberta.
- ↘ \* **Golden Jubilee**, F—Early, good yellow of attractive appearance.
- ↘ \* **Rochester**, F—Very hardy, thrifty grower. Medium size, deep yellow and red, excellent quality. Especially good west of Cascade mountains.
- ↘ \* **Herb Hale** (U. S. Plant Pat. No. 588) F—New, early shipping and canning peach. Large size, excellent quality, yellow meated. Ripens right after Rochester. Exclusive “C&O” introduction.
- ↘ **Valiant**, F—Resembles Elberta but more globular in shape and of better quality. Considered best canner in Ontario, Canada.
- ↘ **Slappy**, F—Large, deep yellow, one of the finest home canners.
- ↘ **Early Crawford**, F—Large yellow—good home garden peach.
- ↘ \* **Champion**, F—White-fleshed peach. Firm, sweet, delicious flavor. Good bearer.
- ↘ **Halehaven**, F—Promising commercial type. Early, excellent fruit, good shipping and bearing qualities, vigorous growth and resistance to low temperatures.
- ↘ \* **Veteran**, F—Elberta type peach. Tree vigorous grower, early production. Very popular in Canada and west of Cascade mountains.
- ↘ **Redelberta** (U. S. Plant Pat. No. 232), F—A bud sport of the Elberta. Matures about 10 days earlier and has double the red color. Exclusive “C&O” introduction.
- ↘ **Early Elberta**, F—Also known as Improved Elberta. Large golden yellow. Excellent quality, good shipper and commercial canner.
- ↘ **Elberta**, F—Very large, bright yellow. Good shipper. One of the most popular canning peaches.
- ↘ **J. H. Hale**, F—Very large golden yellow overlaid with brilliant carmine coloring. Yellow flesh, solid and meaty, free from stringiness. First class shipper.
- ↘ **Candoka** (U. S. Plant Pat. No. 51), F—The “fuzzless” peach. Most beautiful peach grown. Very large, firm, richly flavored. Exclusive “C&O” introduction.
- ↘ **Late Crawford**, F—Very large, yellow with dark red cheek. Tree vigorous and hardy.
- ↘ **Indian Blood**, C—Large, deep red with red flesh. Ideal for pickling and preserving.
- ↘ **Miller (Orange) Cling**, C—Large, yellow. Good flavor, excellent for home canning.
- ↘ **Rio Oso Gem** (U. S. Plant Pat. No. 84), F—Best late variety. Large, firm texture with excellent rich, juicy, sweet flavor.
- ↘ **October Krummel**, F—Large, round, deep yellow color with dark carmine blush. One of the very latest ripening varieties.



# Apricots

(For Prices, See Page 3)

Varieties listed in order of ripening.

**Yakimene** (Acme)—A Japanese apricot. Large, early, handsome. Excellent dessert.

**Riland** (U. S. Plant Pat. No. 74)—Discovered and introduced by "C&O". The earliest commercial apricot. Excellent shipper, good canner; brings top prices. Takes on beautiful color, very attractive.

**Sun-Glo** (U. S. Plant Pat. No. 751)—Newest "C&O" apricot introduction. Medium size, fine quality apricot. Beautiful glossy finish. Fine shipper, productive.

**Perfection**—Very large, ripening same time as Wenatchee. Promising new commercial variety.

**Chinese**—This new apricot is early bearing, a heavy producer, medium size, yellow, good quality.

**Wenatchee**—Large, good quality, a dessert apricot. Leading commercial variety of the Wenatchee Valley. (Formerly called Wenatchee Moorpark.)

**Blenheim**—Medium size, oval, deep yellow. Good canner and drying—excellent quality. Productive.



TILTON

**Tilton**—Larger than Blenheim, extra good quality, fine flavor. Considered one of the best commercial canners.

**Moorpark**—See Wenatchee Apricot above.

**J. L. Budd**—A small Russian apricot—very hardy. Will grow where other apricots fail. Delicious kernel.

SUN-GLO  
APRICOT



Wenatchee, Washington

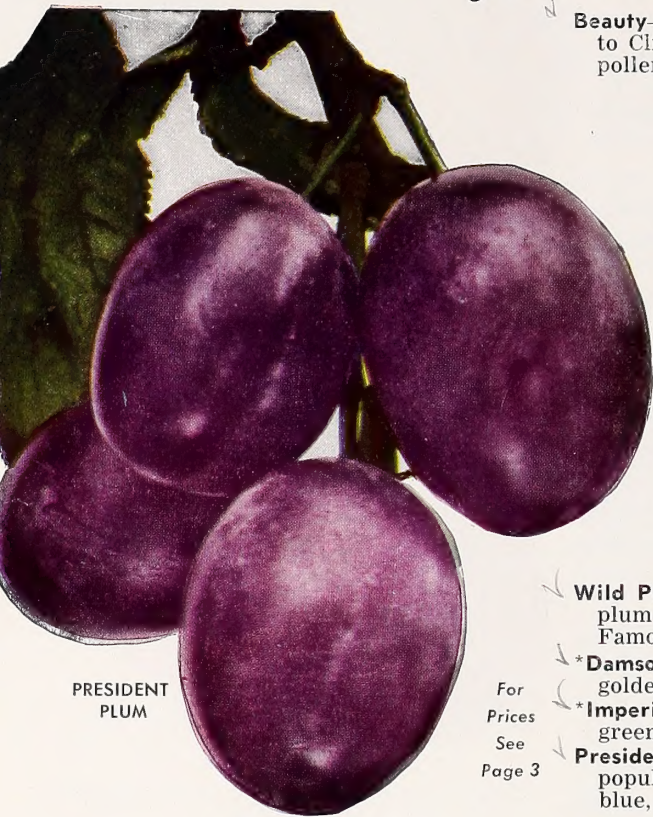
# Quince

(For Prices, See Page 3)

**Orange**—Large, round bright yellow. An old favorite of the finest quality.

**Pineapple**—Very large, apple-shaped, flavor resembles pineapple. Deliciously fragrant when fresh and delicious when cooked.

## Plums



PRESIDENT  
PLUM

For  
Prices  
See  
Page 3

↘ **Beauty**—Similar in quality and appearance to Climax, two weeks earlier. Excellent pollinizer for Santa Rosa.

↘ **Climax**—Very large, heart-shaped, deep red skin, yellow flesh. Good shipper.

↘ **Duarte**—Juicy, sweet, red flesh. Earlier and hardier than Satsuma.

↘ **Maynard**—Very large, nearly round, rich crimson-purple, sweet.

↘ **Santa Rosa**—One of the largest, most beautiful plums. Dark crimson, almost round, excellent shipper.

↘ **\*Yakima**—Very large, oval shape, red skin. Flesh clear golden-yellow, firm.

↘ **Simonii**—Shape and color like a tomato.

↘ **\*Peach Plum**—Very large, roundish, purple. Excellent for eating fresh, also canning.

↘ **Wild Plum**—This is the popular old wild plum native to the Mid-West and East. Famous for jams and plum butter.

↘ **\*Damson**—Small, oval, dark purple, flesh golden yellow. Excellent canner.

↘ **\*Imperial Gage**—Fruit small, round, skin greenish yellow. Good canner.

↘ **President**—Late ripening shipping variety, popular and profitable. Fruit large, dark blue, roundish. Flesh yellow.

## Prunes

↘ **Early Italian**—Resembles Italian, slightly larger and sweeter. Two weeks earlier. Good commercial variety. Origin: A bud sport of the Italian.

↘ **Sugar**—Very large, oval, dark purple, tender and sweet; particularly fine for home canning and drying—contains almost 24% sugar.

↘ **Hungarian**—Very large, dark red, juicy and sweet. Its bright color, productiveness and shipping qualities make it profitable for home or market.

↘ **Double X French (Improved Petite)**—Sport of Petite—just as rich and sweet but larger. Excellent for drying, culinary and shipping.

↘ **Italian**—Medium size, oval tapering at both ends; dark purple, flesh greenish yellow; separates freely from pit. Excellent for eating fresh and the best for drying.



EARLY ITALIAN PRUNE

# Cherries

(Varieties Listed in Order of Ripening)

**Important facts to know when ordering Cherry Trees**—We gather and process our own cherry seed from trees approved by state horticulturists . . . trees visibly free from virus diseases. Under the supervision of our own trained crew as well as State and Federal Inspectors, these seedlings are grown and when budded only bud wood from inspected trees of proven merit is used. These named varieties are grown another season with the same rigid inspection. After digging, the trees again are closely inspected for any irregularities—the trees you buy are the ones which have met and passed all these requirements.



BING CHERRIES

## PRICES on CHERRY TREES

Sizes	Caliper	Each	25 Lots	50 Lots	300 Lots
3 to 4 foot	3/8-1/2 inch	\$1.20	\$ .95	\$ .85	\$ .80
4 to 6 foot	1/2-5/8 inch	1.35	1.10	.95	.90
{ 5 to 7 foot	5/8-3/4 inch	1.60	1.25	1.05	1.00
} Extra Select Grade.					

**Note:** Some varieties, especially sour cherries, make a lower height in relation to caliper. In these instances the caliper will govern the grades.

**Write for Our Special Commercial Prices in lots of 1000 or more trees.**

## SWEET CHERRIES

- Black Tartarian—Large, purplish black, juicy and rich. Certified pollinizer.
- Royal Ann—Large, pale yellow with red cheek, firm, juicy and sweet. In demand by canneries. Trees bear early and productive.
- Centennial—Originated as seedling of Royal Ann. Large, yellow, certified pollinizer.
- Deacon—Black, resembles Bing—not quite as large. Very resistant to cracking. One of the best pollinizers—Certified.
- Bing—Large, black, fine flavor, good shipper. A leading commercial variety.
- Black Republican—Medium size, shining black, good quality. Certified pollinizer.
- Van—New Canadian introduction. Promising as a commercial variety as well as an

excellent pollinizer. Fruit resembles Bing.

- Lambert—Large, dark purplish black, sweet, rich. Leading commercial variety after Bing.
- Spalding—Introduced by U. of Idaho. New and promising. Large, black, very firm.

## SOUR CHERRIES

- Early Richmond—Medium size, dark red, acid. Good home canner.
- May Duke—Medium, red, juicy and rich.
- Montmorency—Medium size, dark red, good quality and flavor. The leading sour cherry for commercial canneries.
- Late Duke—Large, light red, good quality and flavor. Not so sweet as May Duke and ripening considerably later.
- English Morello—Medium, dark red, very sour and very acid. Good canner.



# Dwarf Fruit Trees

Fruit trees **small enough for any backyard** or city lot are not only fun, but profitable to grow.

Dwarf Fruit trees are produced on special root stocks that restrict only the size of the tree—size of fruit is not dwarfed. They also bear younger than standard trees—trees planted in the Spring often have fruit in the Fall of the following year.

Our Dwarf Apple trees are budded on "Malling IX" roots—producing a true fully dwarf type tree. For home gardens, we recommend planting 10 to 12 feet apart. Commercial planting should be 15 to 20 feet apart.

**Special Planting Instructions**—Set the trees with the point of union between dwarf root and budded variety about 3 inches above ground—this eliminates the chance of the variety rooting on the standard variety which then would produce normal-sized trees. Otherwise, dwarf fruit trees are grown and cared for the same as any other fruit tree.

**PRICES on DWARF FRUIT TREES** . . \$2.50 each. Dozen or more, \$2.25 each.  
(Varieties marked with an asterisk (\*) do well west of the Cascade Mountains.)

## APPLES

- \***Lodi**—An improved Yellow Transparent. The best summer variety.
- \***Red Gravenstein**—Large, bright red, crisp and juicy. The best Fall variety.
- \***Blackmack** (T.M. Reg.)—Beautiful all red McIntosh. Crisp, tender, juicy and distinctive flavor. The best early winter variety. Exclusive "C&O" introduction.
- Blackjon** (T.M. Reg.)—Famous as a good eating apple, highly flavored, excellent for dessert, pies or culinary use. Exclusive "C&O" introduction.
- \***Shotwell Delicious** (U. S. Plant Pat. No. 90)—A deep red Delicious. Fruit large, real delicious flavor, fragrant aroma. Recommend pollination with one of the other varieties. Exclusive "C&O" introduction.
- \***Yellow Delicious**—An apple of unusually fine flavor and rich golden skin. An especially good home orchard variety.

## APRICOTS

- Riland** (U. S. Plant Pat. No. 74)—Early, firm, globular, flame-red shading to orange. Flesh deep yellow. Exclusive "C&O" introduction.
- Perfection**—A new very large dessert apricot. Ripens same time as Wenatchee.
- Blenheim**—Medium size, oval, deep yellow. Good canner and drying—fine quality.

## PEARS

- Bartlett**—Juicy, buttery, excellent dessert, canning and general purpose.
- \***Seckel**—Small, sweet and juicy. Especially popular for pickling and culinary use.

## PEACHES

- \***Redhaven**—Good quality, yellow flesh, early freestone. Large, highly colored.
- \***Rochester**—Especially good west of Cascade mountains. Deep yellow and red, excellent quality. Comes into bearing early.
- \***Herb Hale** (U. S. Plant Pat. No. 588)—Large, excellent quality, yellow meated. Fine for eating fresh or canning. "C&O" introduction.
- Early Elberta**—Large, golden yellow. Good shipper and canner. Also known as improved Elberta.
- J. H. Hale**—Excellent late season freestone. Large, golden yellow overlaid with brilliant carmine coloring. First class shipper.

## PRUNES

- Double X French**—Just as sweet and rich as Petite, but larger. Excellent for culinary.
- Italian**—Dark purple, flesh greenish yellow; medium size, oval tapering at both ends. An old favorite fresh, canned or dried.

## PLUMS

- Climax**—Very large, heart-shaped, deep red skin, yellow flesh. Excellent early plum.
- \***Yellow Egg**—Large, egg shaped, deep golden yellow. Good canner.
- \***Peach**—Very large, roundish, purplish-red. Flesh golden yellow. Delicious flavor.

# Nectarines

(For Prices, See Page 3)

A most delicious fruit—cross between a peach and a plum. Similar to peaches, but have smooth skin. Aromatic.

**Boston Red**—Large size, deep yellow with bright red blush and rich creamy white flesh.

**Quetta**—Large, yellowish green splashed with brilliant carmine. Flesh yellowish white, juicy and of fine texture.

**Sure Crop, F**—New, from New Zealand. Large, white overlaid with attractive red. Flesh firm, tender, freestone.



SURE CROP NECTARINE

# Nut Trees

## ALMONDS

3 to 4 foot: \$1.25 ea. Doz. Lots \$1.10 ea.  
4 to 6 foot: \$1.50 ea. Doz. Lots \$1.35 ea.

\***I.X.L.**—Large, soft shell.

\***Nonpareil**—Thin "paper-shell". Good cropper. Each variety should be planted for proper pollination.

## FILBERTS

3 to 4 foot: \$1.40 ea. Doz. Lots \$1.25 ea.  
4 to 6 foot: \$1.65 ea. Doz. Lots \$1.50 ea.

\***Barcelona**—Large, round, comes free from husk. Pollenize with DuChilly or Daviana.

\***DuChilly**—Large, long nut, superior quality. Tree not so large as Barcelona.

\***Daviana**—Long type nut similar to DuChilly. Tree large grower. Excellent pollinizer for DuChilly and Barcelona.

\***Royal**—New, high quality filbert, very large, round nut.

### SIZE—

3 to 4 foot ..... Each \$2.50  
4 to 8 foot ..... Each \$2.75

## ENGLISH WALNUTS

**Franquette**—One of the best English Walnut varieties for the Northwest. Large, well-filled nuts.

3 to 4 foot, Grafted ..... \$2.75  
3 to 4 foot, Not Grafted ..... \$2.25  
4 to 6 foot, Grafted ..... \$3.00  
4 to 6 foot, Not Grafted ..... \$2.50

**SeeandO** (T.M. Reg.)—Local walnut developed from an old hardy tree. Thin-shelled, plump. Grafted trees. An exclusive "C&O" introduction.

4 to 6 foot ..... Each \$3.25  
6 to 8 foot ..... Each \$3.75

## BLACK WALNUTS

**American**—Standard black walnut. Fine shade tree. Good pollinizer for English Walnuts.

3 to 4 foot ..... Each \$2.00  
4 to 6 foot ..... Each \$2.25

**Thomas**—Soft shell, good quality nut. Heavy bearer. Grafted trees.

3 to 4 foot ..... Each \$2.75  
4 to 6 foot ..... Each \$3.00



ENGLISH WALNUTS



CONCORD  
GRAPES



THOMPSON  
SEEDLESS

## Grapes

(Varieties Listed in Order of Ripening)

	Each	12 lots	25 lots	50 lots	100 lots
PRICES: All Varieties except as noted (*):	\$ .50	\$ .45	\$ .40	\$ .35	\$ .30
*GOLDEN MUSCAT and BLACK MONUKKA:	.75	.70	.65	.60	.55

### AMERICAN VARIETIES (Hardy)

- ↳ **Fredonia** (Black)—Early grape. Berries large, round, hang well, fine flavor.
- ↳ **Campbell's Early** (Black)—Large, sweet and juicy. Good keeper and shipper.
- ↳ **Island Belle** (Black)—The favorite grape for west of the Cascade mountains. Large, sweet.
- ↳ **Niagara** (White) — The standard white grape, called "White Concord." Good quality.
- ↳ **Caco** (Wine-red)—Compact bunch, good size, exceptional merit. Hardy, thrifty grower.
- ↳ **Concord** (Purple)—One of the most popular of all grapes. Sweet and finely flavored. The best grape for jelly, juice and jams.
- ↳ **Golden Muscat**—New, large beautiful golden berries, rich and sweet. Muscat flavor.

### EUROPEAN VARIETIES (Medium Hardy)

- ↳ **Csaba** (Pearl of Csaba) (White)—Hardest, north European grape, small seeds, excellent table grape, good wine grape. Early.
- ↳ **Black Monukka** (Black) — New, seedless, very sweet, large. A grape everyone should have.
- ↳ **Malaga** (White) — Large bunches, vine strong grower, very productive. Good shipper.
- ↳ **Ribier** (Black)—Large berries on well filled clusters. Firm, juicy and sweet. Very fine.
- ↳ **Thompson Seedless** (White)—Bunches large and long. Seedless, small and sweet.
- ↳ **Flame Tokay** (Red)—Berries large, thick skin flame colored. Flesh firm, sweet, sprightly flavor. A beautiful grape for table use.

# Berries

Every Home Should Have An Assortment of Berry Plants

(Spring Delivery Only)

**PRICES for BOYSENBERRY, NECTARBERRY and BLACKBERRY**

No. 1 Plants

Each \$ .50

Per doz. \$4.50

Per 25 \$8.50

Per 100 \$25.00

**THORNLESS BOYSENBERRY** — All the fine qualities of the regular Boysenberry. Berries are large, rich wine color, unsurpassed flavor.

**NECTARBERRY** — As large as Boysenberry, said to be sweeter. Seedling of the Youngberry.

### RASPBERRIES

Each	Per 12	Per 25	Per 50
\$ .40	\$4.00	\$7.50	\$12.50

**Cumberland (Black Cap)** — One of the best and largest of all black caps.

**Indian Summer (Red)** — Everbearing, very productive, large, fine quality.

**Washington (Red)** — New very fine variety. Cross of Cuthbert and Lloyd George.

### GOOSEBERRIES

(Sold in State of Washington only.)

**Oregon Champion** — Largest, best commercial variety, free from mildew. Each 50c; per dozen, each 45c.

### CURRANTS

(Sold in State of Washington only.)

**Perfection** — Red, finest and largest grown. Plants prolific, vigorous. Each 50c; per dozen, each 45c.

**MERCEREAU BLACKBERRY** — Hardy, upright canes. Heavy producer, sweet.

**CASCADE BLACKBERRY** — New, wild type but twice as large as the original wild blackberry. Excellent flavor. Very heavy producer.

### STRAWBERRIES

(No order accepted for less than 25 of a variety.)

**Northwest (Standard)** — New, large, beautiful deep red clear through. Sweet, excellent canner and freezer. Bears very heavy. Per 25 \$1.50; per 50 \$2.50; per 100 \$4.00; per 1000 \$30.00.

**Streamliner (Everbearing)** — Rich red berry, excellent canner and freezer. Per 25 \$2.00; per 50 \$3.25; per 100 \$6.00; per 1000 \$45.00.

**Rockhill (Everbearing)** — Considered the very best of the everbearers. Excellent flavor, large, heavy bearer. Few runners. Per 25 \$3.00; per 50 \$5.50; per 100 \$9.50; per 1000 \$75.00.



BOYSENBERRY



WASHINGTON RASPBERRY

### ASPARAGUS — RHUBARB — HORSERADISH

	Each	Dozen	50	100
ASPARAGUS—Mary Washington		\$1.00	\$ 2.50	\$ 4.00
RHUBARB—McDonald Red	\$ .40	4.00	14.00	25.00
HORSERADISH (crowns)	.20	2.00	7.00	12.50

# C & O Parade of Finest

## LARGE THRIFTY 2-YEAR-OLD PLANTS



HELEN TRAUBEL  
(Pat. 1028)

**Betty Uprichard**—Large two-tone pink.  
Profuse .....\$1.25

**Blanche Mallerin** (Plant Patented)—Pure white, satiny, long buds open to large bloom, fragrant—strong plant.....\$2.00



**Capistrano** (Plant Patented) — All America winner for 1950. Unusually large buds and flowers, fragrant, deep glowing, rose-pink, long stems, leathery foliage .....\$2.00



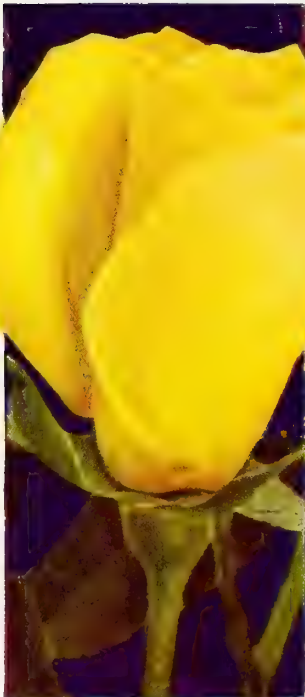
**Charlotte Armstrong** (Plant Patented)  
—Long, slender carmine bud, brilliant cerise blooms. Each.....\$2.25

**Chas Mallerin** (Plant Patented)—Rich, velvety crimson, fragrant, beautiful buds. Each .....\$2.50

**Christopher Stone**—Glowing brilliant crimson-scarlet with deeper shadings, long buds, good foliage.....\$1.25



**Chrysler** (Plant Patented)—The Red Red Rose: from crimson to garnet to oxblood. Long buds unfold to 4½" to 5" blooms. The only hybrid tea to win the All America award for 1953.....\$2.50



ECLIPSE



CHARLES MALLERIN  
(Pat. 933)

---

If 12 or more roses are ordered you may discount above price ten per cent.

---



# ROSES in the West

## WILL BLOOM THIS YEAR

**Countess Vandal**—Long pointed buds. Carmine pink, shaded soft pink and gold.  
Each .....\$1.50

**Crimson Glory**—An outstanding free and fragrant bloomer. Vivid crimson red.  
Each .....\$1.50

**Dainty Bess**—Single shell pink with vivid wine colored stamens.....\$1.25



**Diamond Jubilee** (Plant Patented)—

All America winner for 1948. Glowing buff-orange with a touch of orange-yellow at base of petals. Non-fading, fragrant, long stem, dark green foliage..\$2.00



**CHRYSLER IMPERIAL**  
(Pat. 1167)



**CHARLOTTE ARMSTRONG**  
(Pat. 455)

**Happiness** (Plant Patented)—Unusually brilliant flaming red; vigorous; long stems.....\$2.00



**Helen Traubel** (Plant Patented)—

Long tapering buds, sparkling pink to luminous apricot, fragrant. All America for 1952.....\$2.50



**Lowell Thomas** (Plant Patented)—All

America winner for 1944. Rich golden yellow that does well in all areas..\$2.00



**Mission Bells** (Plant Patented)—All

America winner for 1950. Deep salmon-pink opening to a clear-shrimp-pink, non-fading, long stems.....\$2.00



**Mirandy** (Plant Patented)—All America

winner for 1945. Gorgeous fragrant, deep red with black shadings..\$2.25



**Mojave** (Plant Patented)—All America

winner for 1954. Glowing Radiant Orange, scarlet and vermilion tones. The long stemmed buds open to fragrant richly colored blooms.....\$2.75

**Doctor Debat** (Plant Patented)—Handsome new big pink rose, long rich pink to salmon buds, vigorous heavy bloomer..\$2.00

**Eclipse**—Long streamlined bud. A rich, superb yellow.....\$1.75

**Etoile de Hollande**—Dark velvety, red, large, fragrant, profuse.....\$1.25

**Feu Joseph Looymans**—Shapely, long buds, apricot yellow.....\$1.25



**Forty-niner** (Plant Patented) — All

America winner for 1949. Brilliant two-tone flame red and clear yellow reverse. Very striking.....\$2.50



**Fred Howard** (Plant Patented)—1952

All America. Bronzy yellow, edged with pink. Big and vigorous.....\$2.50

**Mrs. Sam McGredy**—Long, coppery buds, copper-orange flushed with red.....\$1.25

# C & O Parade of Finest

LARGE THRIFTY 2-YEAR-OLD



NEW YORKER  
(Pat. 823)

**McGredy's Ivory**—Creamy white with light yellow base. Long pointed buds.....\$1.25

**New Yorker** (Plant Patented)—Huge deep red blooms, very fragrant. Described as "The best red Rose of all time".....\$2.00



**Nocturne** (Plant Patented)—All America winner for 1948. Dark red, very large, perfect buds .....\$2.00



**Peace** (Plant Patented)—All America winner for 1946. Large golden yellow petals edged with pink.....\$2.50

**President Eisenhower** (Plant Patented)—Large, rich, unfading uniform red-rose. Good dark green disease-resistant foliage .....\$2.50

**President Hoover**—Combines shades of cerise-pink, scarlet and yellow.....\$1.25

**Saturnia** (Plant Patented)—Brilliant cardinal red with salmon-yellow reverse. \$1.75

**Signora** (Plant Patented)—Long buds of warm, burnt sienna, opening to a lighter hue toward mandarin.....\$1.75

**Sleigh Bells** (Plant Patented)—Beautiful snowy buds edged with pink. Profuse bloomer .....\$2.00



**Sutter's Gold** (Plant Patented)—All America winner for 1950. Long, pointed, bright yellow buds, richly shaded with orange and red, long lasting, very fragrant .....\$2.25



MOJAVE  
(Pat. 1176)

Roses with the symbol



in front have been All America Rose Selections in the year of their introduction, chosen for top performance in all parts of the U. S.


# ROSES in the West

PLANTS WILL BLOOM THIS YEAR


**Suzon Lotthe** (Plant Patented)—  
Peach colored buds shading to  
pink. Deep leathery disease re-  
sistant foliage..... \$2.00

**Symphonie** (Plant Patented)—A gor-  
geous pink, from silver pink to  
deep rose. Fragrant. Free bloom-  
er. Large blooms.....\$2.00

**Talisman**—Golden yellow, scarlet and  
orange .....\$1.25

 **Tallyho** (Plant Patented)—All Amer-  
ica winner for 1949. Two-tone.  
Unique rose pink, outer petals rich crim-  
son. Long beautiful buds, spicy fra-  
grance .....\$2.00

**The Doctor**—Huge silvery pink blooms,  
very striking, fragrant.....\$1.25

 **Tiffany** (Patent Applied for)—Only  
1955 All America Winner in the Hy-  
brid Tea class. Both the buds and the  
lovely high-centered open blooms are per-  
fect "picture" pink. See color illustration  
on back cover.....\$3.00

**Austrian Copper** (Single)—Intense cop-  
per-red, reverse of petals bright  
golden yellow. A large spectacular  
shrub ..... \$1.25



SUTTER'S GOLD  
(Pat. 885)

## Shrub Rose

**Austrian Copper** (Single)—Intense copper-  
red, reverse of petals bright golden yellow. A large spectacular shrub.....\$1.25




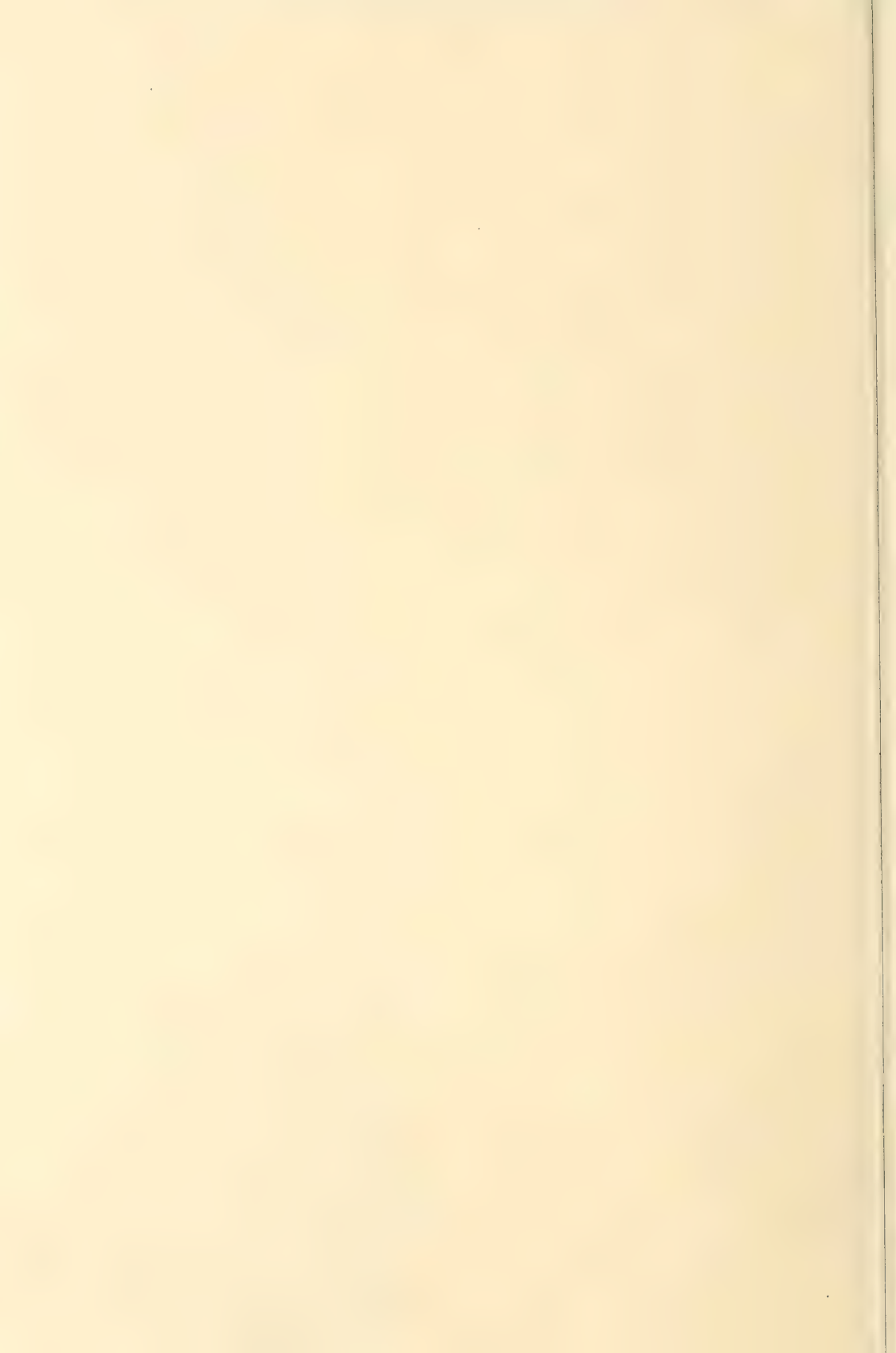
SYMPHONIE  
(Pat. 958)

## Grandiflora

### A New Class of Roses

Plants of relatively tall growth, free flow-  
ering—often with many flowers in clusters,  
but with individual stems long enough for  
cutting. Strong, disease-resistant plants.

 **Queen Elizabeth** (Plant Patented)—  
1955 All America Winner. The un-  
usually clear glowing blooms are a beau-  
tiful blend of soft carmine rose and dawn  
pink. (See illustration on back cover.)  
Each .....\$3.00



# C & O Selection of FLORIBUNDA Roses

Hardy, Disease-resistant, Profuse Bloomers — Easy to Grow  
They Include THE FINEST VARIETIES DEVELOPED

This family of roses is fast taking its place as one of the most popular for general garden use. For masses of color all summer and fall plant them in solid beds, for borders, or in with evergreens, shrubbery and perennials.



LILIBET (Pat. 1207)

Climbing BLAZE



**Donald Prior** (Plant Patented)—Large, free-flowering semi-double, bright scarlet.....\$1.50

**Fashion** (Plant Patented) — All America winner for 1950. Beautiful coral suffused with gold...\$2.00

**Floradora**—Geranium red. Blooms constantly, highly rated...\$1.35

**Goldilocks** (Plant Patented)—Has an abundance of golden yellow buds and blooms.....\$1.50

**Irene of Denmark** (Plant Patented)—Perfect white buds, good size blooms. Very hardy.....\$1.75

**Jiminy Cricket** (Patent Applied for)—1955 All America Winner. Tangerine red buds opening to coral-orange. Pleasing old rose fragrance. Foliage lush glossy green. (See color illustration on back cover.).....\$2.50

**Lilibet** (Patent Applied for)—All America Winner for 1954. A glowing pink, very free flowering throughout the season. A wonder rose.....\$2.00

**Mme. Cecil Brunner**—Exquisite tiny pink buds, the sweetheart rose. \$1.25

**Ma Perkins** (Plant Patented)—A salmon pink sport of Fashion. All America winner for 1953...\$2.00

**Pinocchio** (Plant Patented)—Salmon buds open to pink blooms, shaded deeper at edges.....\$1.50

**Valentine** (Plant Patented)—Fine, low growing, different shade of brilliant scarlet.....\$1.75

**Vogue** (Plant Patented)—1952 All America winner. Rich cherry coral, fragrant, dark green foliage. Each.....\$2.00

**World's Fair** (Plant Patented)—Similar to Donald Prior but larger and darker red. Very fine. Each.....\$1.50



FASHION (Pat. 789)

VOGUE (Pat. 926)

**10% DISCOUNT**  
on 12 or more  
roses of your  
selection.

# C & O Selection of Climbing Roses

Provide Curtains of Color for Your Home and Garden

**Blaze**—Most popular scarlet, recurrent bloomer.....\$1.50

**Countess of Stradbroke**—Dark, glowing crimson, very fragrant, recurrent bloomer, rich foliage.....\$1.25

**Dr. J. H. Nicolas** (Plant Patented)—Immense 6-inch blooms of entrancing deep rose-pink. Double. Hybrid Tea type blooms. Each.....\$2.00

**Etoile de Hollande**—Dark velvety red, recurrent bloomer. Each.....\$1.25

**Goldilocks** (Plant Patented) — Yellow. Everblooming.....\$2.50

**New Dawn** — Attractive light pink, everblooming.....\$1.50

**Peace** (Plant Patented) — New, large lemon-yellow edged rose-pink, very double.....\$2.00

**Paul's Scarlet**—Produces a mass of large, scarlet bloom. Very striking.....\$1.25

**President Hoover** — Multi-color. Pink, scarlet and gold.....\$1.25

**Talisman** — Golden-yellow, scarlet and orange. Large blooms. Each.....\$1.25

**White Dawn**—A pure white everblooming climber.....\$1.50



# Colorful C & O Deciduous



DEUTZIA, PRIDE OF ROCHESTER

LYNWOOD GOLD FORSYTHIA (U. S. Plant Pat.)



**ALMOND**—Small shrub with double flowers in great profusion in early spring before the leaves appear. **Pink or White**.....\$1.35

**ALTHEA (Rose of Sharon)**—Large, erect shrub. Flowers large, double, in brilliant colors. **Red, White, or Purple**.....\$1.35

**AZALEA**—See "Shrubs—Balled and Burlapped" on page 33.

## BARBERRY

**Japanese (Thunbergii)**—3-4 ft. Rich green foliage, graceful shrub.....\$1.10

**Red Leaved**—Graceful shrub 3-4 ft. From bronzy red to bright crimson.....\$1.35

**BEAUTY BUSH (Kolkwitzia)**—Slender, graceful arching branches covered with pink flowers, late spring. Height 5-7 ft.....\$1.35

**BUTTERFLY BUSH (Buddleia)**—Upright, strong growing shrub with long spikes of flowers from early July continuous throughout the summer—

**Charming**—Exquisite pink .....\$1.35

**Royal Red (Plant Pat.)**—Best red.....\$1.60

## DEUTZIA

**Gracilis**—Dwarf shrub, profusion of pure white flowers in May.....\$1.35

**Lemoine**—Medium size 4-5 ft., showy white flowers in May and June.....\$1.35

**Pride of Rochester**—Fine tall growing shrub, large double white flowers tinged rose. A lovely sight in June.....\$1.35

## FORSYTHIA

**Fortunei**—Upright, bright yellow flowers very early spring.....\$1.35

**Lynwood Gold (U. S. Plant Pat.)**—New, deeper yellow flowers, upright .....\$1.50

REDLEAF BARBERRY



# Flowering Shrubs

- HEATHER**—See "Broadleaf Evergreens" on page 32.
- HONEYSUCKLE, Tatarian**—One of the best tall growing shrubs 8-9 ft. Grows in sun or partial shade. Flowers followed with clusters of berries. **Pink or Red**.....\$1.35
- HYDRANGEA, Arborescens (Hills of Snow)**—4-5 ft. White flat-topped clusters of blossoms 5 to 7 inches across, early spring .....\$1.35
- HYDRANGEA P.G.**—5-7 ft. Very hardy. In July develops large white flower 8 to 12 inches .....\$1.35
- Nikko Blue**—See "Shrubs—Balled and Burlapped" on page 33.
- HYPERICUM, Sungold (U. S. Plant Pat.)**—Low growing shrub loaded with yellow bloom throughout the summer. Fine for slopes .....\$1.50
- KERRIA, Japonica**—4-5 ft. Double, clear yellow rose-like flowers in summer.....\$1.35
- LILACS (Syringa)**—One of America's most beloved flowering shrubs, especially the French Budded.
- Common Purple (S. vulgaris)**—Old Favorite .....\$1.35
- Common White (S. vulgaris alba)**.....\$1.35
- Persian, Purple**—More slender than common .....\$1.75
- BUDED FRENCH LILACS**—Each .....\$2.25
- Charles Joly**—Very striking double, purple-red.
- Ludwig Spaeth**—Single, purplish red.
- Katherine Havemeyer**—Double, mauve pink.
- Miss Ellen Willmott**—Best double white.
- President Grevy**—Double, clear soft delicate blue.

HYPERICUM SUNGOLD



PHILADELPHUS VIRGINIAL

---

Our shrubs are No. 1 Grade and at least two years old and have excellent roots and tops. Most of this stock will bloom the first year planted.

---

PINK FLOWERING ALMOND





WEIGELA ROSEA

**DECIDUOUS FLOWERING SHRUBS—**  
(Continued)

**MOCK ORANGE**

**Minnesota Snowflake** (U. S. Plant Pat.)—Very showy large white blooms. NEW .....\$1.65

**Virginal**—Very fragrant white blooms, semi-double. An old favorite .....\$1.35

**POTENTILLA, Gold Drop**—Small shrub, fern like leaves with buttercup yellow blossoms all summer and fall .....\$1.50

**QUINCE, Japanese Flowering**—Bushy growth, large, open orange-red flowers .....\$1.35



**SPIREA**

**Anthony Waterer**—Dwarf shrub with flat heads of red flowers. Free bloomer.....\$1.35

**Blue Mist**—Low growing, lacy blue flowers. New .....\$1.50

**Froebelii**—Similar to Anthony Waterer excepting taller grower.....\$1.35

**Prunifolia** (Bridalwreath)—Charming small, double white flowers in May.....\$1.35

**Van Houttei**—Flowers in great clusters forming attractive white plumes.....\$1.10

**TAMARIX**

**African**—Drooping, feathery foliage, dusky pink flowers. Large shrub.....\$1.35

**Hispida**—Upright, bluish-green foliage, bright pink flowers. Large shrub.....\$1.35

**VIBURNUM**

**Plicatum**—Japanese Snowball. White balls of bloom which have a beautiful setting in the clean, deep green foliage.....\$1.50

**Tomentosum**—White flowers borne in flat clusters, followed by red berries which later change to black.....\$1.50

**Burkwoodii**—See "Broad Leaf Evergreens".

**WEIGELIA**

**Rosea**—Delicate pink, bell-shaped blossoms in June. Tall shrub.....\$1.35

**Bristol Ruby** (Plant Patented)—New, carmine red flowers, free blooming.....\$1.60

*Hedge Plants*

**PRIVET, English**—Smooth, dark green leaves, hardy, and stands the severest pruning.

	25	50	100
2 to 3 ft. ....	\$10.00	\$17.50	\$32.50
3 to 4 ft. ....	12.50	22.50	40.00

**PRIVET, Lodense**—Dwarf, compact grower, excellent for low-growing hedges and borders.

	25	50	100
12 to 15 in. ....	\$12.50	\$22.50	\$40.00
15 to 18 in. ....	15.00	25.00	45.00

*Vines and Creepers*

Our Vines and Creepers are all two or more years of age. No. 1 Grade.

**HONEYSUCKLE**

**Scarlet Trumpet**—Bright scarlet flowers all summer. Strong grower.....\$1.10

**Hall's Japan**—Flowers white which gradually change to cream. Fragrant.....\$1.10

**Gold Flame**—The large flame-coral trumpets lined with gold. Hardy.....\$1.35

**IVY, Boston**—Beautiful vine for covering bare spots on buildings and masonry.....\$ .85

**ENGLEMAN'S CREEPER**—Quick growing, foliage turns a rich crimson in autumn. Hardy .....\$ .85

**WISTERIA (Sinensis)**—The immense purple flower racemes produce a very striking effect .....\$1.35

← HONEYSUCKLE GOLDFLAME



# Shade and Ornamental Trees

**Note**—Figures following variety names indicate approximate height of trees at maturity.

## ASH

**Green**—50 ft. A native hardwood, shapely round top, good foliage, fast grower.

6- 8 ft. ....	\$3.00
8-10 ft. ....	\$4.00

**Mountain**—See Mountain Ash.

## BIRCH

**European White**—35 ft. Attractive, white bark, good foliage, graceful shape. Desirable for street, lawn or landscape effect.

5- 6 ft. ....	\$2.75
6- 8 ft. ....	\$3.50
8-10 ft. ....	\$5.00

**Cut-Leaf Weeping**—40 ft. Tall and slender, graceful drooping branches, delicate cut foliage. An aristocrat. The white bark makes it strikingly beautiful.

5- 6 ft. ....	\$4.00
6- 8 ft. ....	\$5.00
8-10 ft. ....	\$6.50

---

**Washington State Tax:** Add 3% Washington State Tax on all orders for landscape material for delivery within the State of Washington.

---

EUROPEAN WHITE BIRCH



BECHTEL'S DOUBLE FLOWERING CRAB

## CATALPA

**Western Catalpa**—35 ft. Desirable, large, rapid growing; large leaves, attractive clusters. White flowers in July.

6- 8 ft. ....	\$3.00
8-10 ft. ....	\$4.00

## CHERRY—Flowering

**Kwanzan**—20 ft. A fine, graceful shade tree, covered with masses of beautiful double rose-pink blossoms. Very ornamental.

3-4 ft. ....	\$2.50
4-5 ft. ....	\$3.00

**Japanese Weeping**—12 ft. A handsome specimen tree, pink flowers, spreading.

4-5 ft. ....	\$5.00
--------------	--------

## CRAB—Flowering

**Almey**—New, large crimson flowers, a mass of fiery bloom.

4-5 ft. ....	\$2.50
5-6 ft. ....	\$3.00

**Red Vein**—20 ft. Large flowers followed by purple red fruit and purple leaves.

4-5 ft. ....	\$2.00
5-6 ft. ....	\$2.50

**Bechtel**—15 ft. Large, double pink blooms.

2-3 ft. ....	\$1.75
--------------	--------



# Shade and Ornamental

## LINDEN

**American (Basswood)**—60 ft. Splendid for street, lawn or park planting.

6- 8 ft. ....	\$3.25
8-10 ft. ....	\$4.00

## LOCUST

**Black**—60 ft. Rapid growing, sweet scented white flowers in June.

5-6 ft. ....	\$2.00
6-8 ft. ....	\$2.50

**Globe**—15 to 20 ft. Desirable for street planting. Globe head is natural and requires little if any pruning.

Medium size ..... 6 to 7 ft. head.....	\$4.00
Large size ..... 6 to 7 ft. head.....	\$6.00



PAUL'S SCARLET HAWTHORN

## ELM

**American**—60 ft. A noble, stately tree grows to great size, spreading top.

6- 8 ft. ....	\$3.25
8-10 ft. ....	\$4.50

**Siberian (or Chinese)**—30 to 40 ft. Very fast growing drought resistant, quick, dense shade.

5- 6 ft. ....	\$2.00
6- 8 ft. ....	\$2.50
8-10 ft. ....	\$3.50

**GOLDEN RAIN**—30 ft. Flowers form on upright pyramids up to 1½ ft. in height, often last for more than a month. They are followed by balloon shaped yellow seed pods. An unusual, very attractive tree.

5-6 ft. ....	\$3.50
6-8 ft. ....	\$4.50

**GOLDEN CHAIN**—30 ft. Graceful ornamental tree, yellow blossoms, hang in chains 4 to 8 in. long. Rare.

5-6 ft. ....	\$3.00
6-8 ft. ....	\$3.75

**GINKGO BILBOA (Maiden Hair)**—50 ft. Slow growing, beautiful fan shaped large leaf. A novelty.

4-5 ft. ....	\$3.00
5-6 ft. ....	\$3.50
6-8 ft. ....	\$4.00

## HAWTHORN

**Paul's Scarlet**—25 ft. Beautiful ornamental, covered with carmine red flowers in spring, red berries in fall and winter.

5-6 ft. ....	\$3.00
6-8 ft. ....	\$4.00



GOLDEN CHAIN

## LOCUST—Continued

**Honey (Thornless)**—75 ft. Rapid growing, irregular shape, desirable specimen.

5-6 ft. ....	\$2.25
6-8 ft. ....	\$3.00

**Pink Flowering**—40 ft. A fine new tree similar to Black Locust but has large clusters of deep pink flowers. Outstandingly beautiful. Practically seedless.

5-6 ft. ....	\$2.75
6-8 ft. ....	\$3.50

# Trees...

Growing conditions for shade trees are excellent at Wenatchee. The "C. & O." Northern grown shade trees are full of life and vigor.



FLOWERING  
CHERRY KWANZAN  
(Page 23)

## MAPLE

**Norway**—60 ft. Large handsome tree symmetrical rounded top. One of the best shade trees for general purposes.

5- 6 ft.....	\$2.25
6- 8 ft.....	\$3.00
8-10 ft.....	\$4.00

CRIMSON KING MAPLE



## MAPLE—Continued

**Globe**—15 to 20 ft. Has natural globe head, very striking appearance, clean.

5-6 ft. head.....	\$4.00
-------------------	--------

**Schwedleri** — 50 ft. Strikingly beautiful, large bright red leaves in spring, turning to green in summer and yellow in fall.

5- 6 ft. ....	\$2.75
6- 8 ft. ....	\$3.50
8-10 ft. ....	\$4.50

**Crimson King**—50 ft. (Plant patented.) An improved Schwedler. Brilliant, red foliage all through the season. Magnificent—very clean.

5-6 ft. ....	\$4.00
6-8 ft. ....	\$6.00

**Silver**—75 ft. Rapid growing, large spreading, excellent for quick shade. Leaves green, silver underneath.

5- 6 ft. ....	\$2.00
6- 8 ft. ....	\$2.75
8-10 ft. ....	\$3.50

**Sugar**—60 ft. Slow growing, leaves highly colored in autumn.

5-6 ft. ....	\$2.25
6-8 ft. ....	\$3.00

# Shade and



WEeping PEACH (In Our Display Grounds)

## PLUM, FLOWERING— Continued

- Prunus Thundercloud—  
15 ft. Deep maroon colored foliage, light pink bloom.
- |              |        |
|--------------|--------|
| 3-4 ft. .... | \$2.00 |
| 4-5 ft. .... | \$2.50 |

- Prunus Triloba — 8 ft.  
Dwarf, beautiful double rose pink flowers. Known as Rose Tree of China.
- |              |        |
|--------------|--------|
| 2-3 ft. .... | \$1.75 |
| 3-4 ft. .... | \$2.25 |

## MOUNTAIN ASH

- European—20 ft. Attractive foliage, white flowers in spring, orange red berries in fall. A beauty for lawn or park.
- |              |        |
|--------------|--------|
| 5-6 ft. .... | \$2.50 |
| 6-8 ft. .... | \$3.00 |

## MULBERRY

- Russian—30 ft. Rapid grower, bushy top.
- |               |        |
|---------------|--------|
| 5- 6 ft. .... | \$2.25 |
| 6- 8 ft. .... | \$2.75 |
| 8-10 ft. .... | \$3.50 |

## PEACH, FLOWERING

- Camelliaflora—20 ft. Bright, double pink flowers.
- |              |        |
|--------------|--------|
| 3-4 ft. .... | \$2.00 |
| 4-5 ft. .... | \$2.50 |
- Burbank Red—20 ft. Choice double red flowers.
- |              |        |
|--------------|--------|
| 3-4 ft. .... | \$2.00 |
| 4-5 ft. .... | \$2.50 |
- Burbank White—Attractive double white flowers.
- |              |        |
|--------------|--------|
| 3-4 ft. .... | \$2.00 |
| 4-5 ft. .... | \$2.50 |
- Red Weeping—Clean, abundance of early red blooms. Attractive.
- |              |        |
|--------------|--------|
| 4-5 ft. .... | \$3.00 |
|--------------|--------|

## PLUM, FLOWERING

- Prunus cistena—18 ft. Rich, soft, pink blooms, foliage deep red to purple.
- |              |        |
|--------------|--------|
| 3-4 ft. .... | \$2.00 |
| 4-5 ft. .... | \$2.50 |

## POPLAR

- Bolleana—50 to 60 ft. Tall narrow top—fast grower. Desirable for quick shade.
- |               |        |
|---------------|--------|
| 6- 8 ft. .... | \$2.25 |
| 8-10 ft. .... | \$3.00 |
- Carolina—75 ft. Very fast growing. Used for windbreaks and quick shade.
- |               |        |
|---------------|--------|
| 6- 8 ft. .... | \$2.00 |
| 8-10 ft. .... | \$2.75 |
- Lombardy—80 to 90 ft. Tall, narrow, picturesque, desirable for windbreaks. See illustration.
- |               |        |
|---------------|--------|
| 6- 8 ft. .... | \$2.25 |
| 8-10 ft. .... | \$3.00 |

## SCYAMORE (Plane Tree)

- American—60 ft. Fine specimen or street tree, fast growing, very large leaves. Excellent.
- |               |        |
|---------------|--------|
| 6- 8 ft. .... | \$3.25 |
| 8-10 ft. .... | \$4.00 |

## PRUNUS CISTENA



# Ornamental Trees . . .



GLOBE LOCUST (In Street Planting)

**TULIP TREE**—60 to 80 ft. Handsome pyramidal, very large, handsome foliage, yellow green waxy flowers like Tulips, hence the name. Clean, desirable.

5-6 ft. ....\$2.75

## WILLOW

**Golden**—25 to 30 ft. Fast growing, golden yellow twigs and bark. Very attractive, quick shade.

6-8 ft. ....\$2.50

8-10 ft. ....\$3.00

**Niobe Golden Weeping**—30 ft. Fast growing, large spread. Golden bark and twigs. Ornamental.

6-8 ft. ....\$3.00

**Wisconsin Weeping**—40 ft. Large, fast growing tree with long, drooping branches—deep green foliage.

5-6 ft. ....\$2.50

6-8 ft. ....\$3.00

---

Shade and ornamental trees not only add beauty, comfort and value to the home, but they air condition both the grounds and the home. They are an investment—not a luxury.

---



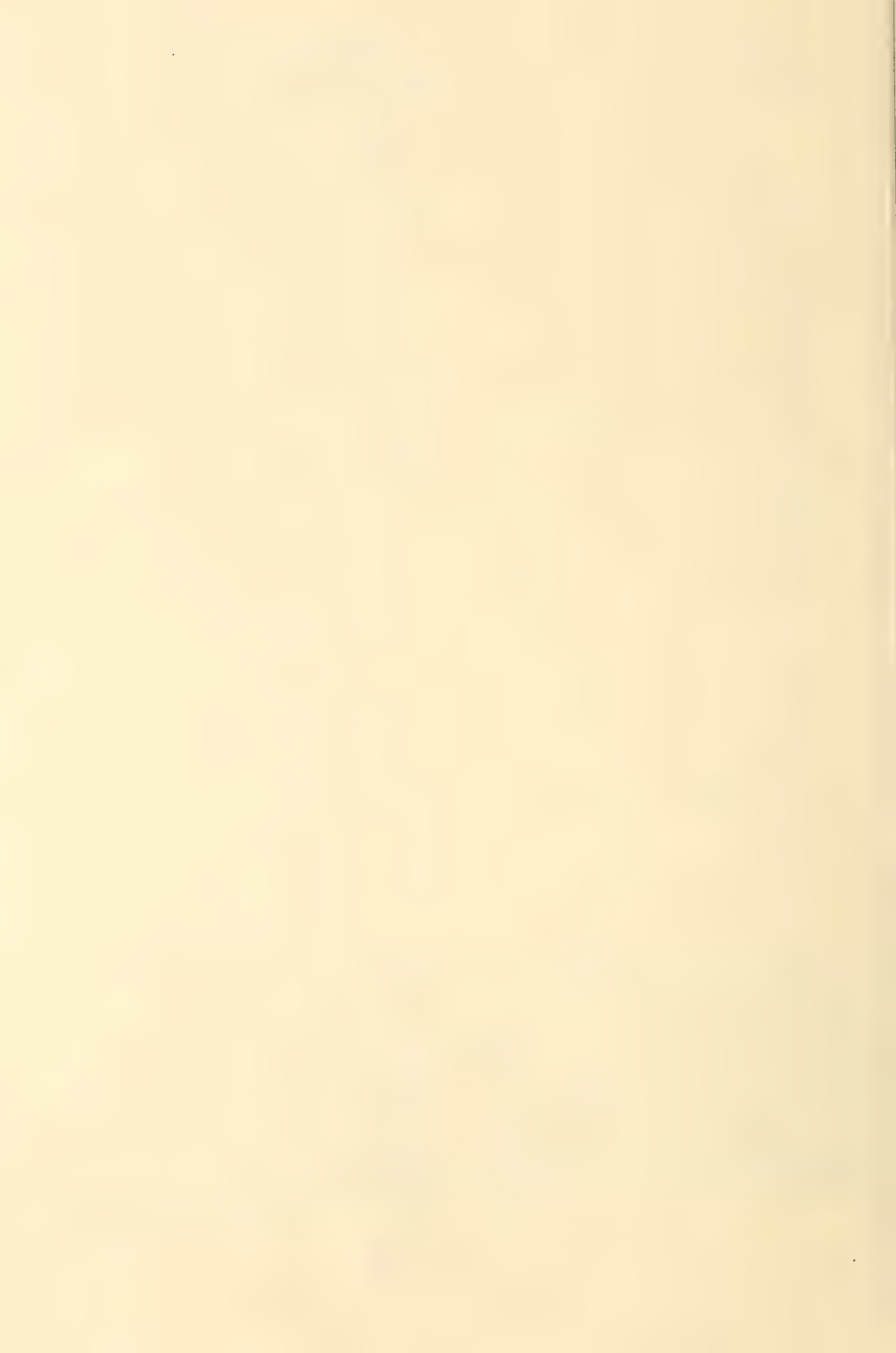
CHINESE ELM



NORWAY MAPLE



LOMBARDY POPLAR



# C & O Northern— Grown Evergreens...

## JUNIPERS—Continued

**Pfitzer's Chinese** (*J. chinensis pfitzeriana*) — Wide spreading, bushy, feathery gray-green foliage. 4 to 6 ft. height at maturity.

15-18 in. ....	\$4.00
18-24 in. ....	\$5.00
24-30 in. ....	\$6.00

**Pfitzer's Golden** (*J. chinensis pfitzeriana aurea*)—Same as Chinese except golden color.

15-18 in. ....	\$4.50
18-24 in. ....	\$5.50

**Savin** (*J. sabina*)—Dark green, branches semi-spreading, dense, tufted. About 4 ft.

15-18 in. ....	\$4.00
18-24 in. ....	\$5.00

**Sylvester** (*J. sylvestris*) semi-spreading, fan shape, blue-green foliage. About 6 ft.

15-18 in. ....	\$4.00
18-24 in. ....	\$5.00

**Tamarix** (*J. sabina tamariscifolia*)—One of the finest creeping varieties, dense, blue-green, compact.

12-15 in. ....	\$4.00
15-18 in. ....	\$5.00
18-24 in. ....	\$6.00

**Waukegan** (*J. horizontalis douglasi*) — Very distinctive on account of its pink fall and winter color. Low growing, spreading.

15-18 in. ....	\$3.00
18-24 in. ....	\$4.00

MUGHO PINE



ENGLISH YEWE



TAMARIX JUNIPER



## PINE (Pinus)

**Mugho** (*P. mughus*)—Dwarf, somewhat globe shape, rich green. Fits into many types of plantings.

12-15 in. ....	\$4.00
15-18 in. ....	\$4.50

**Scotch** (*P. sylvestris*) — Rugged irregular growth. Fine for hillsides, windbreaks, etc.

2-3 ft. ....	\$3.50
3-4 ft. ....	\$4.50
4-5 ft. ....	\$5.50



COLORADO BLUE SPRUCE

## RETINOSPORA (Chamaecyparis)

**Filifera** (*C. pisifera filifera*) — Semi-dwarf, bright green, gracefully drooping branches.

15-18 in. ....	\$4.50
----------------	--------

**Golden** (*C. pisifera filifera aurea nana*)—Dwarf, with graceful drooping golden foliage.

15-18 in. ....	\$4.50
----------------	--------

**Plume** (*C. plumosa*)—Lacy, bright green, globe shaped. Excellent for specimen or foundation.

15-18 in. ....	\$3.00
18-24 in. ....	\$4.00



PLUME RETINOSPORA

## SPRUCE (Picea)

**Colorado Green** (*P. pungens*)—Bright green, beautiful. Grows into large size tree.

2-3 ft. ....	\$4.00
3-4 ft. ....	\$5.00
4-5 ft. ....	\$6.50

**Colorado Blue** (*P. pungens glauca*)—Same as Colorado Green excepting blue-green color.

18-24 in. ....	\$7.00
2-3 ft. ....	\$8.50

**Norway** (*P. excelsa*) — Rapid grower forming a lofty, well-shaped tree. Excellent for wind breaks and hedges. Write for quantity prices.

2½-3 ft. ....	\$4.00
3-4 ft. ....	\$5.00
4-5 ft. ....	\$6.00
5-6 ft. ....	\$7.00

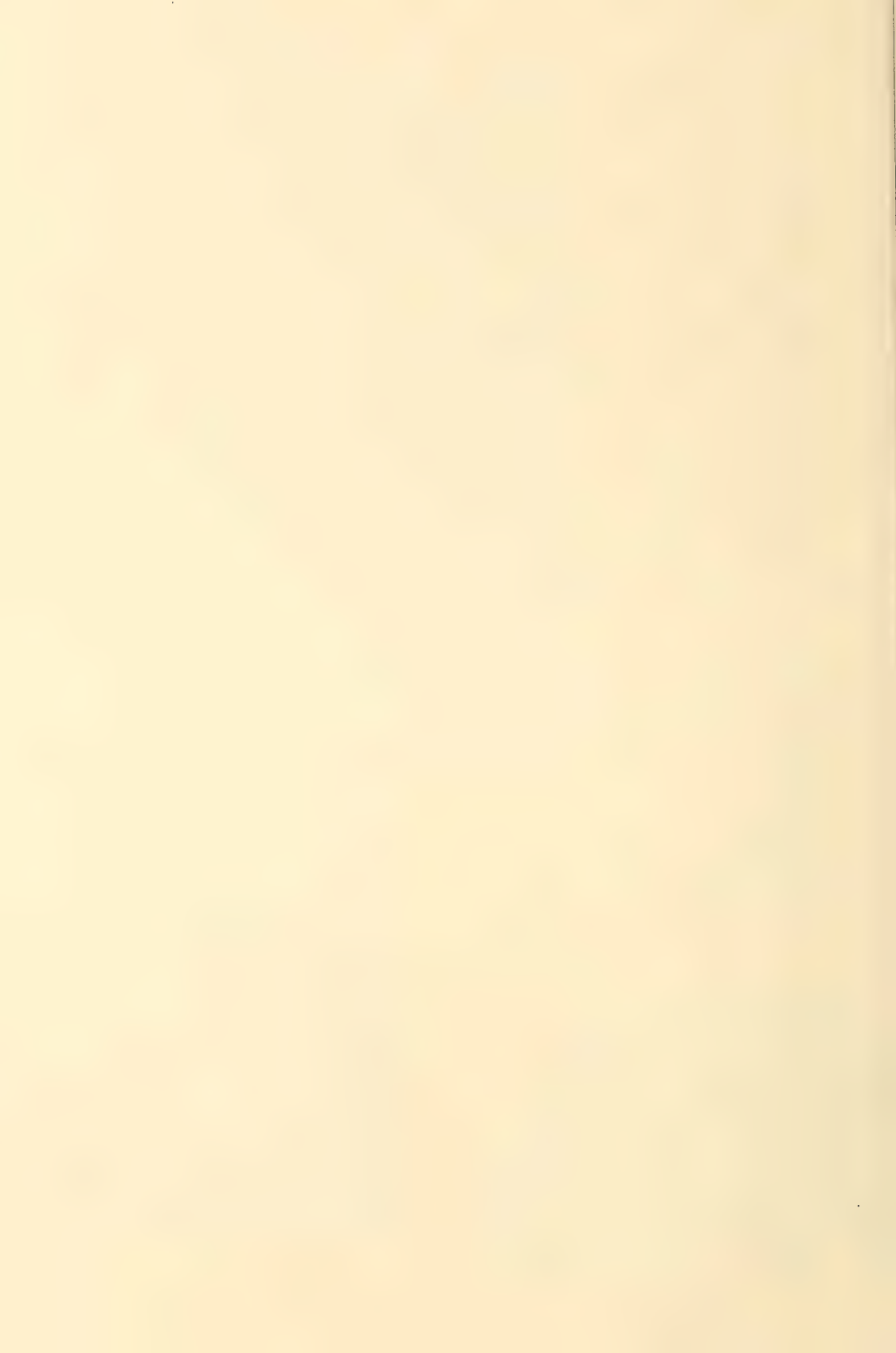
## YEW (Taxus)

**English Pyramidal** (*T. baccata*)—Broad at base, tapering. Rapid grower, 8 to 10 ft.

18-24 in. ....	\$5.50
24-30 in. ....	\$6.50
30-36 in. ....	\$7.50
3-4 ft. ....	\$9.00

**Spreading** (*Taxus cuspidata*) — Graceful, bushy growth. Dark green, easily trimmed.

15-18 in. ....	\$5.00
18-24 in. ....	\$6.00
24-30 in. ....	\$7.50







ENGLISH YEWE



TAMARIX JUNIPER



MUGHO PINE

## C & O Northern—Grown Evergreens...

### JUNIPERS—Continued

**Pfitzer's Chinese** (*J. chinensis pfitzeriana*)—Wide spreading, bushy, feathery gray-green foliage. 4 to 6 ft. height at maturity.

15-18 in. ....	\$4.00
18-24 in. ....	\$5.00
24-30 in. ....	\$6.00

**Pfitzer's Golden** (*J. chinensis pfitzeriana aurea*)—Same as Chinese except golden color.

15-18 in. ....	\$4.50
18-24 in. ....	\$5.50

**Savin** (*J. sabina*)—Dark green, branches semi-spreading, dense, tufted. About 4 ft.

15-18 in. ....	\$4.00
18-24 in. ....	\$5.00

**Sylvester** (*J. sylvestris*) semi-spreading, fan shape, blue-green foliage. About 6 ft.

15-18 in. ....	\$4.00
18-24 in. ....	\$5.00

**Tamarix** (*J. sabina tamariscifolia*)—One of the finest creeping varieties, dense, blue-green, compact.

12-15 in. ....	\$4.00
15-18 in. ....	\$5.00
18-24 in. ....	\$6.00

**Waukegan** (*J. horizontalis douglasi*)—Very distinctive on account of its pink fall and winter color. Low growing, spreading.

15-18 in. ....	\$3.00
18-24 in. ....	\$4.00

### PINE (Pinus)

**Mugho** (*P. mughus*)—Dwarf, somewhat globe shape, rich green. Fits into many types of plantings.

12-15 in. ....	\$4.00
15-18 in. ....	\$4.50

**Scotch** (*P. sylvestris*)—Rugged irregular growth. Fine for hillsides, windbreaks, etc.

2-3 ft. ....	\$3.50
3-4 ft. ....	\$4.50
4-5 ft. ....	\$5.50



COLORADO BLUE SPRUCE

### RETINOSPORA (*Chamaecyparis*)

**Filifera** (*C. pisifera filifera*)—Semi-dwarf, bright green, gracefully drooping branches.

15-18 in. ....	\$4.50
----------------	--------

**Golden** (*C. pisifera filifera aurea nana*)—Dwarf, with graceful drooping golden foliage.

15-18 in. ....	\$4.50
----------------	--------

**Plume** (*C. plumosa*)—Lacy, bright green, globe shaped. Excellent for specimen or foundation.

15-18 in. ....	\$3.00
18-24 in. ....	\$4.00



PLUME RETINOSPORA

### SPRUCE (*Picea*)

**Colorado Green** (*P. pungens*)—Bright green, beautiful. Grows into large size tree.

2-3 ft. ....	\$4.00
3-4 ft. ....	\$5.00
4-5 ft. ....	\$6.50

**Colorado Blue** (*P. pungens glauca*)—Same as Colorado Green excepting blue-green color.

18-24 in. ....	\$7.00
2-3 ft. ....	\$8.50

**Norway** (*P. excelsa*)—Rapid grower forming a lofty, well-shaped tree. Excellent for wind breaks and hedges. Write for quantity prices.

2½-3 ft. ....	\$4.00
3-4 ft. ....	\$5.00
4-5 ft. ....	\$6.00
5-6 ft. ....	\$7.00

### YEWE (*Taxus*)

**English Pyramidal** (*T. baccata*)—Broad at base, tapering. Rapid grower, 8 to 10 ft.

18-24 in. ....	\$5.50
24-30 in. ....	\$6.50
30-36 in. ....	\$7.50
3-4 ft. ....	\$9.00

**Spreading** (*Taxus cuspidata*)—Graceful, bushy growth. Dark green, easily trimmed.

15-18 in. ....	\$5.00
18-24 in. ....	\$6.00
24-30 in. ....	\$7.50

# C & O Broadleaf Evergreens

(Balled and Burlapped) — Following Stock F.O.B. Wenatchee.



PYRACANTHA, FIRETHORN



VIBURNUM BURKWOODI

## FIRETHORN

**Pyracantha Lalandi** — Semi-evergreen, rich glossy foliage—white flowers, orange-red berries.

18-24 in. .... \$2.75  
24-30 in. .... \$3.50

## VIBURNUM

**Viburnum Burkwoodi**—Attractive shrub, flowers delicate pink, fragrant ..... \$3.75

## BARBERRY

**Berberis Verruculosa**—Leaves resemble holly, yellow flowers, blue-black berries; spreading. 6 ft. at maturity.

12-15 in. .... \$2.75

## COTONEASTER

**Cotoneaster Horizontalis**—Trailing, glossy foliage, red berries, beautiful autumn color.

15-18 in. .... \$3.00

18-24 in. .... \$3.50

## DAPHNE

**Daphne Cneorum**—Dwarf shrub, reaches 8 to 10 in. in height—spreading, masses of bright pink fragrant flowers.

Medium size ..... \$2.50

Large size ..... \$3.50

## OREGON GRAPE

**Mahonia aquifolium**—Deep glossy holly-like leaves. Bright yellow flowers and clusters of blue berries.

15-18 in. .... \$2.75

18-24 in. .... \$3.75

## HEATHER

**Scotch** (*Calluna vulgaris rosea*)—A solid mass of rich rose colored blossoms late summer.

10-12 in. .... \$1.75

12-15 in. .... \$2.25

**Maxwell** (*Erica F.D. maxwelli*)—Evergreen, dwarf, mass of red blossoms late July and August.

10-12 in. .... \$2.25

12-15 in. .... \$2.75

**Mediterranean** (*Erica mediterranea*)—Evergreen, dwarf, mass of pink blossoms early spring.

10-12 in. .... \$2.25

12-15 in. .... \$2.75



AZALEA MOLLIS — See opposite page

# Shrubs

## Balled and Burlapped

Following Shrubs F.O.B. Wenatchee



MAGNOLIA SOULANGEANA

### AZALEA

- Azalea Mollis**—Orange, red shades.  
 12-15 in. ....\$3.50  
 15-18 in. ....\$4.50
- Azalea Amoena**—Rosy purple.  
 12-15 in. ....\$3.75
- Azalea Amoena Coccinea**—Bright red.  
 10-12 in. ....\$2.50

### DOGWOOD (Cornus)

- Pink Flowering** (C. Fla. rubra)—A magnificent flowering tree, 15 ft. at maturity.  
 2-3 ft. ....\$4.50  
 3-4 ft. ....\$6.00
- White Flowering** (C. Fla.)—Same but with white bloom.  
 3-4 ft. ....\$4.50



PINK FLOWERING DOGWOOD

### DAPHNE

- Daphne Mezerum**—Very early blooming lilac-red shrub.....\$2.75

### HYDRANGEA

- Nikko Blue**—Medium size shrub with large soft blue panicles of bloom. July....\$2.25



HYDRANGEA, NIKKO BLUE

### MAGNOLIA

- Stellata (dwarf)**—White flowers, 3 in. across  
 Shrub or tree grows to 12 ft.  
 18-24 in. ....\$6.00
- Soulangeana**—Pink and white flowers, 6 in. across.  
 2-3 ft. ....\$ 7.50  
 3-4 ft. ....\$10.00

### MAPLE (Acer)

- Bloodleaf** (Acer palmatum atropurpureum)  
 A deep red, tall, bushy growing shrub.  
 2-3 ft. ....\$5.00  
 3-4 ft. ....\$7.00

# Gorgeous Peonies . . . FOR FALL DELIVERY ONLY

## SPECIAL OFFER!

One each "C & O" Special Collection

Duchess de Nemours  
Floral Treasure  
Tourangelle  
Karl Rosenfeld  
Rubra Superba  
Primevere

Value \$8.00

ONLY

**\$6.50**



Following list shows some of the most highly rated varieties according to the ratings of the American Peony Society.

### WHITE

- Festiva Maxima**, 9.3—Large white flecked with crimson .....\$1.10  
**Duchess de Nemours**, 8.1—White with sulphur yellow center.....\$1.10

MONS. JULES ELIE



- Kelways Glorious**, 9.8—Large white with crimson streaks on outside guard petals. Strong grower .....\$2.25  
**LeCygne**, 9.9—(The Swan). Pure white, highest rated peony.....\$2.25

### PINK

- Floral Treasure**, 7.5—Rich pink and salmon .....\$1.10  
**Mons. Jules Elie**, 9.2—Deep shell pink with silvery reflex .....\$1.35  
**Mme. Jules Dessert**, 9.4—Very large glossy flesh pink .....\$1.10  
**LaFrance**, 9.0—Large clear bright pink. Each .....\$1.10  
**Martha Bulloch**, 9.1—Soft, rose-pink shading to silvery shell pink on outer petals. Each .....\$1.60  
**Tourangelle**, 9.4— Pearl overlaid with shades of salmon pink.....\$1.35

### RED

- Karl Rosenfeld**, 8.8—Rich red. Excellent cut flower .....\$1.35  
**Longfellow**, 9.0—Pure bright crimson. Very fine .....\$1.35  
**Mons. Martin Cahuzac**, 8.8—The darkest red peony .....\$1.50  
**Philippe Rivoire**, 9.2—Bright, rich, dark crimson. Highest rated red.....\$1.75  
**Rubra Superba**, 8.4—Brilliant deep crimson .....\$1.10

### YELLOW

- Primevere**, 8.6—Sulphur yellow, fragrant. Fine for cutting.....\$2.00

# Please, Read Carefully:

## GENERAL INFORMATION

**SHIPPING SEASON**—Our shipping season begins about October 25 and continues until late spring. Where planting conditions are favorable, and if customers request, we can make shipments in mid-winter.

**PLANTING INSTRUCTIONS**—Planting instructions are given on the back of a shipping tag attached to every box or bale, also on the back of your Invoice. Most failures are caused by improper planting and lack of proper care for first 30 days after planting. **Do it right** and have successful plantings.

**WE PAY FREIGHT CHARGES** on shipments that weigh 100 pounds or over to any shipping point within the State of Washington (except on Shade Trees, Evergreens, and other items as specified in our price list). All shipments to points outside the State are sold f.o.b. nursery, freight or express charges paid by the purchaser. On small shipments of stock that can be sent by parcel post, add 15% to cost of order to cover estimated postage. **Any overpayment will be refunded** at time of shipment. On any order for \$3.00 or less, please add 45c minimum charge for postage and packing. It is impossible to ship shade trees, evergreens or bulky supplies by mail.

**FRUIT TREE PRICES BASED ON TOTAL QUANTITY**—All Fruit Trees in an order take the same quantity price.—Example, a total of 25 assorted apple, peach and pear take "25 rate".

**SALES TAX**—If you live in the State of Washington, add 3% Sales Tax on all Flowering Shrubs, Roses, Evergreens, Shade Trees or other Landscape Material. **No tax on Fruit Trees or sales out of state.**

### USUAL DISTANCES FOR PLANTINGS

Apple .....	25 to 40 feet apart
Pear .....	20 to 35 feet apart
Sweet Cherry .....	25 to 40 feet apart
Sour Cherry .....	} 20 to 25 feet apart
Plum .....	
Prune .....	
Apricot .....	
Peach .....	
Grapes .....	7 to 10 feet apart
Currants .....	4 to 6 feet apart
Gooseberries .....	4 to 6 feet apart
Raspberries .....	3 to 4 ft. x 5 to 7 ft.
Blackberries .....	3 to 4 ft. x 5 to 7 ft.
Boysenberries .....	7 x 7 ft.
<b>Strawberries</b> — Field culture: 1 to 1½ by 2½ to 3½ feet. Garden culture: 1 to 2 feet.	

### NUMBER OF PLANTS FOR AN ACRE

No. Ft. Apart	Square Method	Triangle Method
10x10	435	505
11x11	360	414
12x12	302	349
13x13	257	295
14x14	222	255
15x15	193	222
16x16	170	190
17x17	150	172
18x18	134	158
19x19	120	138
20x20	108	125
22x22	90	104
24x24	76	88
25x25	69	80
27x27	60	69
30x30	43	55
33x33	40	46
35x35	35	40
36x36	33	38
40x40	27	31

## GUARANTEE

We guarantee all nursery stock shipped by us to be true-to-name, of first quality, free from insect pest or plant disease, and in good, live, growing condition when it reaches you.

We use every precaution to prevent error, but should any occur, we shall gladly replace all untrue-to-name or undesirable stock free of charge. Under no circumstances will we be liable for more than the invoice value at the time of purchase.

Due to conditions beyond our control, soil, weather, etc., we cannot guarantee growth. However, any complaints about failure to start growth made in writing direct to our office within 90 days after planting (by May 15 following delivery on Fall orders), will receive our careful consideration. **It is our aim to have satisfied customers.**

## INDEX

FRUIT	Pages
Almonds .....	11
Apples .....	3- 4
Apricots .....	7
Berries .....	13
Cherries .....	9
Crabapple .....	4
Dwarf Fruit Trees .....	10
Filberts .....	11
Grapes .....	12
Nectarines .....	11
Peaches .....	6
Pears .....	5
Plums .....	8
Prunes .....	8
Quince .....	7
Walnuts .....	11

### ORNAMENTALS

Almond, Flowering .....	20
Althea .....	20
Azalea .....	33
Barberry .....	20, 32
Beauty Bush, Kolkwitzia .....	20
Butterfly Bush, Buddleia .....	20
Cotoneaster .....	32
Daphne .....	32, 33
Deutzia .....	20
Dogwood .....	33
Firethorn, Pyracantha .....	32
Forsythia .....	20
Heather .....	32
Hedge Plants .....	22
Honeysuckle .....	21
Hydrangea .....	21, 33
Hypericum .....	21
Kerria .....	21
Lilacs .....	21
Magnolia .....	33
Maple, Bloodleaf .....	33
Mockorange .....	22
Oregon Grape, Mahonia .....	32
Peony .....	34
Potentilla .....	22
Quince, Flowering .....	22
Roses .....	14 to 19
Spirea .....	22
Tamarix .....	22
Viburnum .....	22, 32
Vines and Creepers .....	22
Weigela .....	22

### TREES, Shade and Flowering

Ash .....	23, 26
Birch .....	23
Catalpa .....	23
Elm .....	24
Fl. Cherry .....	23
Fl. Crab .....	23
Fl. Peach .....	26
Fl. Plum .....	26
Golden Rain .....	24
Golden Chain .....	24
Gingko .....	24
Hawthorn .....	24
Linden .....	24
Locust .....	24
Maple .....	25
Mountain Ash .....	26
Mulberry .....	26
Poplar .....	26
Sycamore .....	26
Tulip Tree .....	27
Willow .....	27

### EVERGREENS (Conifers)

Arboretum .....	28
Fir .....	28
Junipers .....	29, 30
Pine .....	31
Retinospora .....	31
Spruce .....	31
Yews .....	31



FOR NEARLY 50 YEARS the Columbia & Okanogan Nursery Company has been shipping dependable nursery stock from Maine to California and to many foreign countries where fruit is grown. The Columbia & Okanogan Nursery Company has introduced more proven fruit varieties than any nursery company in the west. We solicit your order for quality stock at reasonable prices.

This envelope will safely hold your check or money order. Please do not send currency or coins. Fold on the lines indicated.

FOLD ON THIS LINE

From \_\_\_\_\_  
 \_\_\_\_\_

Place  
 Stamp  
 Here

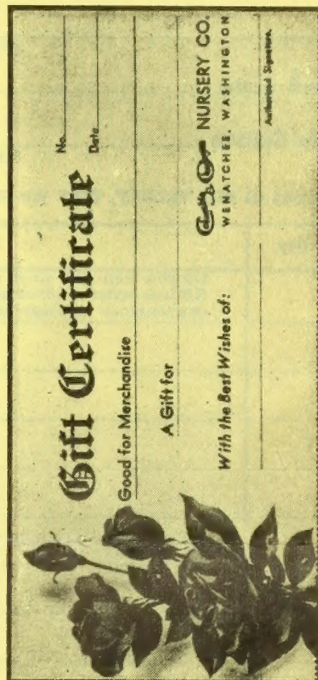
**COLUMBIA & OKANOGAN NURSERY COMPANY**  
**WENATCHEE**  
**WASHINGTON**

**Box 116**

FOLD ON THIS LINE

*For a Gift Sure to Please*  
*Your Gardening Friend or Relative*

Made out in any amount you wish from \$1.00 up. They can also be made out for any specific type of nursery stock with no value showing on the certificate.



FOLD ON THIS LINE

**GENERAL INFORMATION**

**SHIPPING SEASON** — Our shipping season begins about October 25th and continues until late spring. Where planting conditions are favorable, and if customers request, we can make shipments in mid-winter.

**PLANTING INSTRUCTIONS** — Planting instructions are given on the back of a shipping tag attached to every box or bale, also on the back of your invoice. **BE SURE TO FOLLOW THEM.**

Most failures and complaints are caused by improper planting and lack of proper care for first 30 days after planting. **Do it right** and have successful plantings.

**WE PAY FREIGHT CHARGES** on shipments that weigh 100 pounds or over to any shipping point within the State of Washington (except on Evergreens, Shade trees and other items as specified in our price list). All shipments to points outside the State are sold f.o.b. nursery, freight or express charges paid by the purchaser. On small shipments of stock that can be sent by parcel post add 15% to cost of order to cover estimated postage. Any overpayment will be refunded at time of shipment. On any order for \$3.00 or less, please add 45c minimum charge for postage and packing. It is impossible to ship shade trees, evergreens or bulky supplies by parcel post.

# ORDER BLANK



## COLUMBIA & OKANOGAN NURSERY COMPANY WENATCHEE, WASHINGTON Established 1906



This Order is Subject to All Terms, Conditions and Guarantee as Printed in Our Catalog.

Date \_\_\_\_\_, 195\_\_\_

Ship to (Name) \_\_\_\_\_

PLEASE PRINT

Ship Fall \_\_\_\_\_

Street \_\_\_\_\_

(P.O. Box or R.F.D.)

Ship Spring \_\_\_\_\_

City and State \_\_\_\_\_

Express Station \_\_\_\_\_

(If different from Post Office)

If sold out of any variety, may we substitute one of similar or better quality?

YES

NO

Quantity	VARIETY WANTED	Size	Price Each	TOTAL
	Do you want the stock pruned? Write Yes or No. (Unless ordered otherwise the trees and shrubs will be cut back for convenience in shipping only and will require additional pruning.)		\$	
<small>If your order can be shipped by PARCEL POST— be sure to include postage.</small>				
<b>Total</b>			<b>\$</b>	

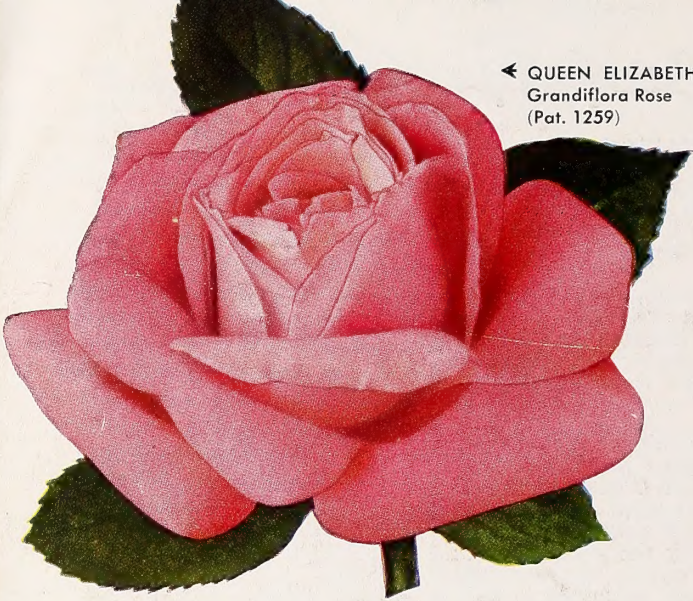
**THIS FLAP IS GUMMED. READY TO SEAL**  
**NO ENVELOPE NECESSARY**  
 FOLD, SEAL AND STAMP

Add 3% Washington State Sales Tax on all orders for Landscape Material for delivery within the State of Washington.





← QUEEN ELIZABETH  
Grandiflora Rose  
(Pat. 1259)



The Three  1955

All America

Selections

TIFFANY  
Hybrid Tea  
(P.A.F.)



← JIMINY CRICKET  
Floribunda Rose  
(P.A.F.)

Return Postage Guaranteed by  
COLUMBIA & OKANOGAN NURSERY CO.  
Wenatchee, Washington

Sec. 34.66 P. L. & R.  
U. S. POSTAGE  
**PAID**  
Permit No. 195  
Wenatchee, Wash.

Library  
U. S. Dept. of Agriculture  
Washington 25, D. C.